

# LED SPOT User Guide

LED Pin Spot, LED PAR36S, LED PAR56R, LED PAR64S, LED PAR375, LED PAR575

## WARNING! - To reduce the risk of fire or injury:

- Never operate this device:
  - If it has a damaged cord or plug
  - If it is not working properly
  - If it has been dropped or damaged, or immersed into water.
 Return the product to the dealer for examination and repair.
- Keep the cord away from heated surfaces.
- Never block the air opening of the device.
- Never place it near fabrics or combustible materials.
- Never drop or insert any object into any opening.
- Always unplug this product immediately after using.

## Operating Instruction

### 1, External trigger function - "AUTO change" model

When all of the dip switches are turned off, the slide-switch is set to "AUTO", then the unit will change its color automatically, then you can adjust its changing speed through the SPEED knob.

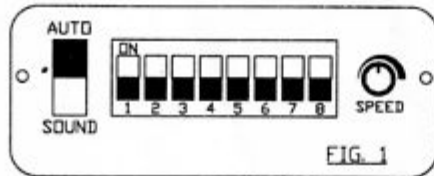


FIG. 1

### 2, External trigger function - Sound control mode

When all of the dip switches are turned off and the sliding switch is to "SOUND", then the unit will change its color under the SOUND's changing.

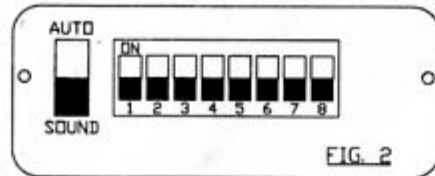


FIG. 2

### 3, Auto-MIX Color mode

When dip8 is "on", the unit step into Auto-mix color mode. The mixing speed is controlled via setting the dip1-7 to "on".

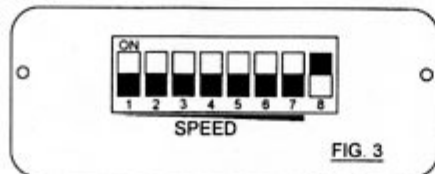


FIG. 3

## 5, DMX mode

When the sliding switch is set to "SOUND", dip8 is "off", one or a few of the other dip switch(es) is(are) on, the unit step into DMX model. The switch 1 - 7 control DMX adrees.

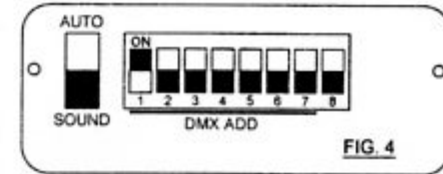


FIG. 4

The unit has 5 control Channels:

CH-1	Red 0—100%								
CH-2	Green 0—100%								
CH-3	Blue 0—100%								
CH-4	Color Macro								
CH-5	DMX Value	0-15			16-255				
	Function	Null			*Strobe model				
*CH-6	DMX Value	0-31	32-63	64-95	96-127	128-159	160-191	192-223	224-255
	Function	Null	Brightness Up cycle	Brightness Down cycle	Brightness Up then down cycle	Mix colors	3-color Change	7-color Change	Sound

\*Strobe mode: This is a strobing speed control mode, You can choose the strobing colors and adjust the strobing brightness via CH-1, CH-2, CH-3 or CH-4, and you can choose CH-1, CH-2 and CH-3 at the same time or separately, but CH-4 is beyond CH-1, CH-2 and CH-3.

\*CH-6: In this channel, you can get 7 color changing models via changing the DMX Value, but the color changing speed is controlled via CH-5(CH-6 is beyond CH-5); When the channel value of CH-6 is between 32 and 127, you must also choose CH-1, CH-2 or Ch-3 by making their channel value above 8, then the brightness of the unit will change under 3 modes: 1, up cycle, 2, down cycle, 3, up then down cycle; When the channel value of CH-6 is between 224 and 255, you must also make sure the sliding switch into "SOUND", then the unit will step into SOUND mode of DMX.

## Connection with the mains

**DANGER TO LIFE!** The electric connection must only be carried out by a qualified electrician!  
In order to connect the device to the mains, you have to install a power-plug. The occupation of the connection-cables is as follows:

Cable	Pin	International
Brown	Live	L
Blue	Neutral	N
Yellow/Green	Earth	⊕

## TECHNICAL SPECIFICATIONS:

Power supply: Max. 230-240V/AC, 50Hz  
Power consumption: Max. 15W